



*"The
Strongest
Hose Clamp System
in the World"*



ezyklik hose clamp

Ezyklik™ plastic hose clamps exhibit a low profile head making it ideal for environments where space and access are limited. However in addition to this Ezyklik™ plastic hose clamp offers many of the benefits and features that the Herbie Clip® double grip hose clamp exhibits.

The Ezyklik™ markets are diverse and cover any application where there is a hose and spigot, the most common are White Goods, Agricultural, Automotive, Spas, Medical, General Industry and Food Processing.

Ezyklik™ Fitting Tools

A choice of manual and semi-automatic tools are available to use with the Ezyklik™ including the vertical & parallel hand tools. HCL also has extensive experience in providing installation solutions to the OEM market. Individual leaflets can be downloaded from the HCL website.



Ezyklik™
Air Tool



Ezyklik™
Vertical Hand Tool



Ezyklik™
Parallel Hand Tool

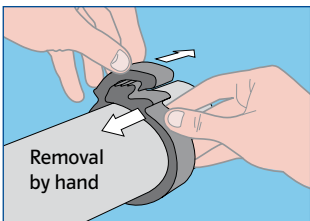
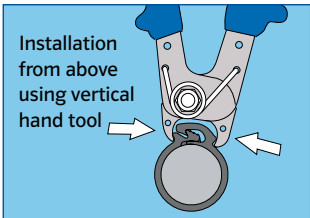
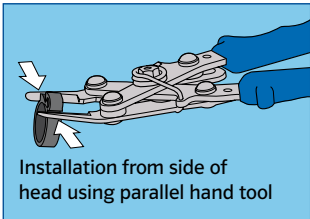
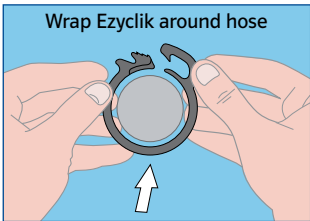
Further options available – see Air Tool flyer

Also available



Also available from HCL – the Herbie Clip® plastic hose clamp – the original double grip hose clamp – highly suited for the OEM industry.

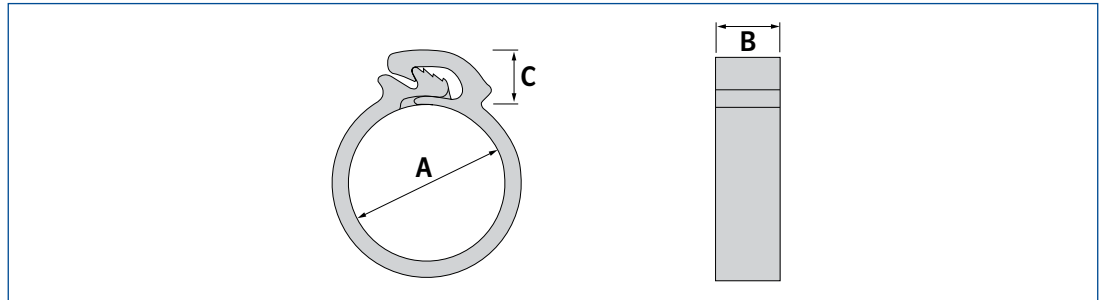
Ezyklik™ Installation and Removal



Ezyklik™ plastic hose clamp features:

- 44 sizes ranging from 8.5mm (0.33") to 45.5mm (1.79")
- Full circle formed – creating zero leak path – New side shut off design
- Made from a choice of materials – standard material is Nylon 6.6. (UL listed & FDA approved) Polypropylene & High temperature resistant glass filled Nylon 6.6. are available on request
- Fire resistance – Nylon 6.6. is also HB-V2 rated – Self Extinguishing
- Non corrosive and no moving parts – preventing seizure or jamming
- Fully ROHS compliant – **RoHS** ✓
- Temperature resistance ranging from -40°C (-40°F) to +200°C (392°F) dependant on material (Nylon 6.6. GF – Max long term temp 140°C (294°F) – Occasional Peak temp 200°C) (Nylon 6.6. – Max long term temp 125°C (257°F) – Occasional Peak temp 170°C (338°F)) (Polypropylene – Max long term temp 60°C (140°F) – Occasional Peak temp 90°C (194°F))
- No sharp edges – improving installation safety
- Full range of manual and air installation tooling
- High chemical resistance and further resistant to oils, petrol's and solvents
- Can resist pressures of up to 200 psi (14bar) and above – fully dependant on quality of hose and spigot fitting
- Full Colour Options – (Black as standard for high UV resistance)
- Manufactured to ISO 9001-2000
- PPAP 3 certification available
- IMDS registered

Ezyklik™ Sizes



Closed diameter (A)		Width (B)		Head Height (C)		Nylon 6.6 Weight		Nylon 6.6 GF Weight		Polypropylene Weight	
mm	inch	mm	inch	mm	inch	grams	ounces	grams	ounces	grams	ounces
8.5	0.33	8.0	0.31	5.3	0.21	0.77	0.027	0.92	0.032	0.61	0.022
8.7	0.34	8.0	0.31	5.3	0.21	0.76	0.027	0.91	0.032	0.61	0.021
8.9	0.35	8.0	0.31	5.3	0.21	0.77	0.027	0.93	0.033	0.61	0.022
9.2	0.36	8.0	0.31	5.3	0.21	0.77	0.027	0.93	0.033	0.61	0.022
9.5	0.37	8.0	0.31	5.3	0.21	0.82	0.029	0.99	0.035	0.66	0.023
11.4	0.45	8.0	0.31	5.5	0.22	0.93	0.033	1.12	0.040	0.75	0.026
12.0	0.47	8.0	0.31	5.6	0.22	0.97	0.034	1.16	0.041	0.77	0.027
12.5	0.49	8.0	0.31	5.7	0.22	0.99	0.035	1.19	0.042	0.79	0.028
12.7	0.50	8.0	0.31	5.8	0.23	0.99	0.035	1.19	0.042	0.79	0.028
13.2	0.52	8.0	0.31	5.8	0.23	1.01	0.036	1.21	0.043	0.81	0.028
13.7	0.54	8.0	0.31	5.8	0.23	1.03	0.036	1.24	0.044	0.82	0.029
14.5	0.57	8.0	0.31	6.8	0.27	1.39	0.049	1.68	0.059	1.11	0.039
14.6	0.57	8.0	0.31	6.8	0.27	1.39	0.049	1.67	0.059	1.11	0.039
15.0	0.59	8.0	0.31	6.8	0.27	1.41	0.050	1.70	0.060	1.13	0.040
15.7	0.62	8.0	0.31	6.8	0.27	1.44	0.051	1.73	0.061	1.15	0.041
15.9	0.63	8.0	0.31	6.8	0.27	1.45	0.051	1.75	0.062	1.16	0.041
16.5	0.65	8.0	0.31	6.8	0.27	1.48	0.052	1.78	0.063	1.18	0.042
16.8	0.66	8.0	0.31	6.8	0.27	1.58	0.056	1.89	0.067	1.26	0.044
17.1	0.67	8.0	0.31	6.8	0.27	1.51	0.053	1.81	0.064	1.20	0.042
17.5	0.69	8.0	0.31	6.8	0.27	1.53	0.054	1.84	0.065	1.22	0.043
17.6	0.69	8.0	0.31	6.8	0.27	1.49	0.053	1.79	0.063	1.19	0.042
18.0	0.71	8.0	0.31	6.8	0.27	1.53	0.054	1.84	0.065	1.22	0.043
18.5	0.73	8.0	0.31	6.8	0.27	1.57	0.055	1.89	0.067	1.25	0.044
19.1	0.75	8.0	0.31	6.8	0.27	1.58	0.056	1.90	0.067	1.26	0.044
19.6	0.77	8.0	0.31	6.8	0.27	1.61	0.057	1.93	0.068	1.29	0.045
20.1	0.79	8.0	0.31	6.8	0.27	1.62	0.057	1.95	0.069	1.29	0.046
20.8	0.82	8.0	0.31	6.8	0.27	1.74	0.061	2.10	0.074	1.39	0.049
21.1	0.83	8.0	0.31	6.8	0.27	1.67	0.059	2.01	0.071	1.33	0.047
22.0	0.87	8.0	0.31	6.8	0.27	1.82	0.064	2.19	0.077	1.45	0.051
22.1	0.87	8.0	0.31	6.8	0.27	1.73	0.061	2.08	0.073	1.38	0.049
22.6	0.89	8.0	0.31	6.8	0.27	1.75	0.062	2.10	0.074	1.40	0.049
24.7	0.97	8.0	0.31	6.8	0.27	1.96	0.069	2.36	0.083	1.57	0.055
25.8	1.02	8.0	0.31	6.8	0.27	2.02	0.071	2.43	0.086	1.62	0.057
26.8	1.06	8.0	0.31	6.8	0.27	2.08	0.073	2.50	0.088	1.66	0.059
28.0	1.10	8.0	0.31	6.8	0.27	2.12	0.075	2.55	0.090	1.70	0.060
30.6	1.20	9.0	0.35	6.8	0.27	2.69	0.095	3.23	0.114	2.15	0.076
31.4	1.24	9.0	0.35	6.8	0.27	2.63	0.093	3.16	0.111	2.10	0.074
36.5	1.44	9.0	0.35	6.8	0.27	3.57	0.126	4.30	0.152	2.85	0.101
42.4	1.67	9.0	0.35	7.3	0.29	4.15	0.146	4.99	0.176	3.31	0.117
43.3	1.70	9.0	0.35	7.3	0.29	4.21	0.149	5.06	0.178	3.36	0.119
45.5	1.79	9.0	0.35	7.3	0.29	4.37	0.154	5.25	0.185	3.49	0.123

ALL WEIGHTS AND DIMENSIONS ARE ±2.5%